

Response

It is your giving that makes the vision possible and your giving that impacts people's lives. So please consider your giving. The most helpful form of giving is regular giving, because this helps us plan and budget effectively. So, if you don't already give regularly, please consider starting. If you already give maybe you are able to increase your giving or give a one off gift.

We encourage you to prayerfully consider the following:

- I will give a one off gift of
.....
- I will begin to give a regular gift of
.....
- I will increase my regular gift by
.....
- I would like someone to send me more information (please tick)

Name.....

Email.....

Please bring this form back to church on our gift day, **Sunday 3rd October** or any Sunday throughout October.

This form simply lets us know how you are going to respond, you will need to take the appropriate action to enable your gift.

If you are currently facing financial hardship, please do let us know so we can pray for you and support you financially.

Ways to Give

There are many ways that you can give, we have summarised them below, and you can find all the information at:

www.sjbchurch.co.uk/giving

Standing Order

The most efficient way for you to give to us is directly via the bank through standing order, as there are no fees involved, and we get 100% of your donation. The bank details are below:

ST JOHNS CHURCH
Account Number: 71544224
Sort Code: 54-21-50
Bank: NatWest

Please quote the reference as 'General Giving'.

Parish Giving Scheme

This method is also efficient as we do not incur any fees. You can sign up to a direct debit taken around the first of the month, either by using the packs in Church or going to:

www.parishgiving.org.uk/donors/find-your-parish/clarendon-park-st-john-leicester/

Online

By debit/credit card at www.sjbchurch.co.uk/giving.

Cash/Cheque/Contactless

Give via these methods on the way out of Church on Sundays.

Gift Aid

If you are a UK tax payer we are able to claim an extra 25% on top of what you give, from the HMRC. We are able to back date claims up to 4 years. If you are able to do this please fill out the form on the giving page of our website. If you are not sure whether this applies to you please contact: hello@sjbchurch.co.uk



**ST JOHN
THE BAPTIST
CHURCH**
LEICESTER



Giving to St John's

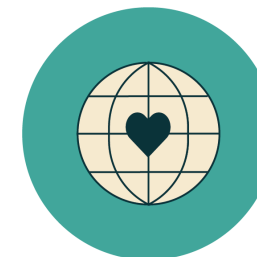
Autumn 2021

We are extended family on mission where **everybody belongs, and everybody contributes**. Part of your contribution to the life of St John's is financial giving.

Make Disciples

Transform Community

Plant Churches



www.sjbchurch.co.uk
hello@sjbchurch.co.uk

Introduction

As part of our refocusing and repurposing following lockdown this Autumn, we are renewing our call to give. **Sunday 3 October** is our Gift Day and between now and then we are asking everyone who considers themselves a member of St John's to prayerfully consider their giving. Regular giving is enormously helpful, but we also rely on generous one-off gifts from some to fund the mission and ministry of the church.

So, please would you pray and consider:

- Making an additional one-off gift to St John's
- Increasing your regular giving to St John's
- Beginning to give regularly to St John's if you don't already do so

Then come on **Sunday 3 October** to any of our services ready to bring your gifts and renewed commitments.

The COVID crisis has affected us financially in different ways. Some of us have faced real financial hardship as income has reduced or jobs have been lost. Others of us have had more money as we have had less things to spend money on or our income has increased. There is no doubt however, that our church finances have been impacted by the crisis. We are forecasting a slight surplus in this year, but our long-range financial planning is currently looking far less favourable. We believe God has called us to an exciting vision and will provide all that we need to make it happen through us.

Principle of Giving

Giving is part of our worship. Jesus was very clear that it's not possible to serve both God and money. We must make sure that God is on the throne of our hearts, not money. One temperature test for this is our attitude towards giving and how willing we are to be generous. Our motivation for generosity is God's goodness to us. We give in response to God's radically generosity to us in giving us his son. The only response to God's radical generosity is radical generosity.

The Old Testament teaches the practice of tithing, that we give as an expression of thankfulness 10% from the first fruits of what we receive. Giving 10% of our income is a good principle to guide our giving. The Bible teaches that giving should be faithful, regular, cheerful, willing, joyful and at times, sacrificial. Sometimes we need to feel the pain of sacrificial giving, we may need to ask what are we giving to before God? But also, there should not be guilt or shame associated with giving – it is never helpful to compare what we give, with what others give.

Vision

St John's has a great story to tell: in this phase within the life of St John's the mission and ministry of the church has been revitalised and we are now able to support a Children's and Families Ministry, a ministry with Young People, have been designated as a Resourcing Church and are now grafting into St Peter's, Oadby. Our vision is to:

'To be the family of God on mission transforming Clarendon Park and beyond with the love and power of Jesus Christ.'

Our Situation

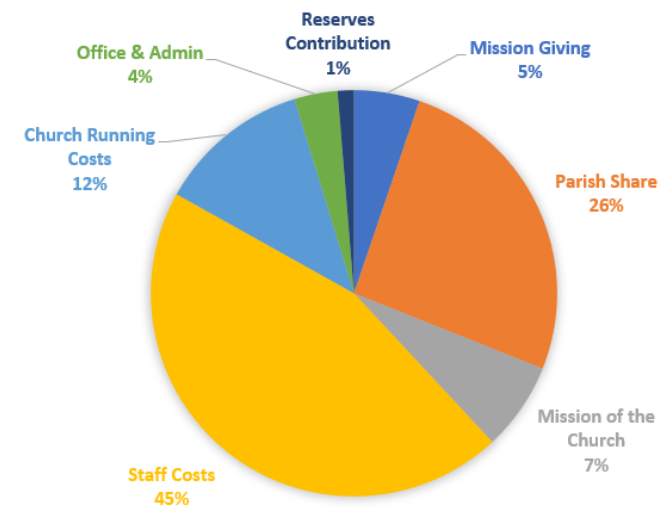
The current situation is that to meet all of our budgeted commitments for 2022 we need to see an increase in giving of £20,000. This is because some of the one-off grant funding that we have is coming to an end and we need to sustain the costs of Ministry for ourselves.

If we claim gift aid on all donations it would amount to £16,000 plus £4,000 Gift Aid, per month that would be £1,333. This could look like:

- All current regular givers increasing their giving by £20 a month
- 5-6 new regular givers
- Several large one off gifts

In reality everyone is different and so it is likely to be a combination of all those things.

How we spend our Money



The PCC take very seriously the need to exercise robust financial management, and we assure you that your gift will be used in the most effective and efficient way possible.